

Spring/Summer 2020

# NRHEG

COMMUNITY EDUCATION

# ACTIVITY GUIDE

Enhancing the  
Quality of life  
for our Communities



# What's Inside ...

# PLAY!

# LAUGH!

# LEARN!

## Contents:

Adult Programming.....22-25

Early Childhood Programs .....6-12, 16, 18

Paid Advertisements.....5, 14, 21, 25

Registration Information.....26-27

School Age Care.....6, 11, 16

Student Enrichment.....12-16

Special Events.....8, 10-11

Youth Development.....15

Youth Recreation.....16-21



**Early Childhood Programs**  
Starts on Page 6



**Youth Enrichment & Sports**  
Starts on Page 12



**Adult Programming**  
Starts on Page 22

## Community Education Advisory Council

Russ Goette  
Amy Stenzel

Jessica Arnold  
Laina Rajala

Rachael Eustice

## Community Education YOUTH Advisory Council

Jerzy Knudson  
Chloe Stork

Nora Flatness  
Jordan Brouwers

## COMMUNITY EDUCATION

306 Ash Ave S., New Richland, MN 56072  
(Located in room D 105B)  
mwhiteside@nrheg.k12.mn.us  
(507)-417-2667

<https://www.nrheg.k12.mn.us/domain/49>

### DISTRICT OFFICE HOURS:

Monday-Friday 7:30am-4:00pm  
Summer Hours: Mon-Thurs 7:00-4:00, Fridays 7-12:00  
(507-465-3206)

**Community Education Office will be closed on:**  
March 27, April 10&13, May 25  
and on Fridays June-August

## Mission

*Empowering students with  
knowledge and skills to succeed.*

## Our Vision

*To be the school district of choice,  
inspiring excellence in academics, arts,  
and activities.*

## STAY CONNECTED

WWW.NRHEG.K12.MN.US  
OR WITH  
NRHEG COMMUNITY ED





# WELCOME

NRHEG Community Education is dedicated to building strong communities by offering lifelong learning experiences through social, educational, and recreational opportunities.



## What is Community Education?

Community Education is an opportunity for local citizens, community schools, agencies and institutions to become active partners in addressing education and community concerns. Community Education embraces these beliefs: education is a lifelong process, everyone in the community shares a responsibility for the mission of educating all members of the community and citizens have a right and responsibility to link the needs of the resources to improve their community.



## Services

### Youth & Adult Programming

Classes provide youth and adults with educational and recreational programs to gain new skills and knowledge while building strong connections and empowering the community

### Early Childhood Services

- Early Childhood Family Education (ECFE)
- Panther Preschool
- Early Childhood Screening

### Facilities Rental

Need gathering space? We have it!



### Share your talents with Community Education.

Community Education classes are flexible and designed to meet the needs of our instructors and the community.

Volunteer and salaried positions are available.

For more information call: 507-417-2667

email: [mwhiteside@nrheg.k12.mn.us](mailto:mwhiteside@nrheg.k12.mn.us)

### Facility Scheduling & Requests

Requests for the use of school facilities are made through the Community Education Office. Please contact the office at 507-417-2667 and ask for a facility use form or go to the NRHEG website and find the form under Community Education. A minimum of three weeks' notice for use of facilities is required.

## We are looking for you!

Community Education and ECFE Advisory Council Members are vital to the community education process. The Community Education Advisory Council is a cross section of people from our community who guide our Community Education programs and make recommendations to the School Board. The ECFE Advisory Council is an integral part of our preschool programming. They help shape our Early Childhood and Preschool programs at NRHEG. If you would like to be a part of the NRHEG Community Education Advisory Council or the Early Childhood Family Education Advisory Council, please contact Macy Whiteside at 507-417-2667 or email me at: [mwhiteside@nrheg.k12.mn.us](mailto:mwhiteside@nrheg.k12.mn.us)

### Why be on an Advisory Council?

\*Make a change

\*Serve the community

\*Make new friends

\*Have a voice

\*Have an impact on education

\*Have an opportunity to be creative

\*Just have some fun

\*Gain knowledge and information

# Youth Development Scholarships

Through the generous donation from the EF Johnson Foundation, we are able to offer \$50.00 scholarships per child for spring & summer programming – visit our website for guidelines and download the application or get one from your school office!

*Income eligibility based off of the free/reduced lunch scale.*



## NRHEG'S Volunteer Program

Volunteers can have a very powerful impact on the students and schools. Volunteers can be a multifaceted resource in a classroom and throughout a school. When students see adult volunteers in their schools, they see firsthand how members of their community value education and support their local school. Available evidence suggests that when adult volunteers are present, students see that adults take school and education seriously and respect learning.

### **Volunteer Opportunities Include:**

Reading & Math Tutors  
Classroom volunteers

Special event volunteers  
Fieldtrip Chaperones

## Advertising Space Available!

Contact Macy Whiteside at  
mwhiteside@nrheg.k12.mn.us or call (507) 417-2667  
for more information. For ad sizes and prices visit  
<https://www.nrheg.k12.mn.us/Page94>

Contact Us Today  
For The  
Fall/Winter



Let us help you celebrate!  
**Birthday Party Package**

**Gym Party - \$60.00**  
**(Ellendale gym or New Richland gym)**

Includes up to 25 children, 1 ½ hours of gym time with one party host who will lead a couple gym games (if desired) while allowing time for free play, ½ hour of cafeteria time for your cake, ice cream, and gift opening. Community Education will supply the equipment such as basketballs, dodge balls, footballs, a parachute, hoola-hoops, jump ropes, kick balls, misc. gym items - you supply the rest! Call 507-417-2667 to check on Gym availability and to schedule your party!



# Finly's Wings at Work

*Finly's Wings At Work is a non-profit organization that was founded in 2018 after we lost our precious Finly at only seven years old. Although her time on earth was extremely short, her impact on family, friends and the community are still huge as she continues to make her presence known.*

FINLY WAS THE SWEETEST, HAPPIEST, MOST GIVING AND LOVING LITTLE GIRL! HER PRECIOUS SPIRIT AND LOVE FOR LIFE WERE SO BEAUTIFUL AND UNDENIABLE. SHE WAS SUCH A BRIGHT, HAPPY AND SPIRITED LITTLE GIRL WHO WILL NEVER BE FORGOTTEN. SHE HAD MANY PASSIONS WHICH INCLUDED GYMNASTICS, DANCING, MUSIC, SINGING, READING BOOKS, CRAFTS, TELLING JOKES, SWIMMING, GETTING DIRTY, AND RANGER RIDES JUST TO NAME A FEW. AND HER BEAUTIFUL HEART WAS SO GENEROUS, WHICH IS WHY FWA<sup>W</sup> WAS FOUNDED—TO GIVE BACK TO CHILDREN IN HONOR OF FINLY TO KEEP HER PRECIOUS MEMORY AND SPIRIT ALIVE. FWA<sup>W</sup> DOES THIS BY PROVIDING LOCAL SCHOLARSHIPS TO SENIORS FROM NRHEC GOING INTO THE MEDICAL FIELD OR A FIELD DIRECTLY RELATED TO CHILDREN, DONATIONS TO LOCAL FUNDRAISERS, CONTRIBUTIONS TO ORGANIZATIONS IN SUPPORT OF CHILDREN AND ALSO CONTRIBUTING TO PEDIATRIC PATIENTS IN PEDIATRIC AND CARDIAC UNITS IN HOSPITALS.

*This is only possible through the extremely generous donations from our sponsors who include:*

REED AND BECKETT BUDACH, RT CRATES, SOIL BUILDERS, SCHLAAK TRUCKING, MAIN STREET DENTAL, BECK'S HYBRIDS, VANHAL TRUCKING, STATE BANK OF NEW RICHLAND, THE WILLOWS, GENEVA LUMBER CO., JETTER CLEAN OF ROCHESTER, EAGLE PRAIRIE INSURANCE, JOHNSON HEATING & A/C, DUFRESNE, WAYNE & ASSOCIATES, GENEVA CANCER AUCTION, BETTY & BUDDY BERG, BUDACH IMP, COMPEER FINANCIAL, SCHLAAK SEEDS, MISGEN AUTO PARTS, MOEN SNOW REMOVAL, LEE FOUNDATION, DIVINE LEIGH BOUTIQUE, KLEMMENSEN CREATIVE, CROSSROADS TRAILER, PIONEER SEED, HOLLAND AC., AARON & AMANDA BETHKE, SORENSON'S APP & TV, PASTOR BRIAN GEGEL, CENTRAL FARM SERVICE, MIDWEST REPAIRABLES, COLLIN, MYA, & LINCOLN MISGEN, JAYDA & MIKALA MOON, BONNIE & JOE ISDER, KENNY THOMPSEN FAMILY, NISSEN FAMILY, MATT & JILL CHRISTENSEN, MARVIN INGVALDSON, LORI & KELLY ROUTH, JARED HENDRICKSON, TEAM ALEX, CLEAN SWEEP CLEANING SERVICE, MANKATO MOTORS, TITAN PRO, JENNIE-O, ONE LITTLE SHIRT SHOP, WASECA REALTY, OLSON EXCAVATING, L&D AC

*We would also like to thank the countless friends and family for their much-appreciated donations!*

*To meet our mission, we rely on the generosity of individuals and businesses for their support. If you would like to make a donation to FWA<sup>W</sup> to help support our cause and also help keep Finly's beloved memory alive, please use the contact information below.*

Sincerely,  
Nick & Erin Budach  
Organizers of Finly's Wings At Work

Nick Budach(507-327-3460)  
John Misgen(507-383-5199)      Brandon Wayne(507-456-6250)





GET READY FOR A SUPER FUN SUMMER

# NRHEG School Age Care

A program of Community Education

Ages Preschool – 5<sup>th</sup> grade

OPEN Monday-Friday 6:30am - 6:00pm, year-round



DAILY PHYSICAL ACTIVITY

WEEKLY PARK VISITS

DAILY MATH PRACTICE

WEEKLY LIBRARY VISITS

FIELD TRIPS

DAILY GROUP GAMES

MONTHLY SERVICE PROJECTS

STEAM ACTIVITIES

DAILY READING

ARTS & CRAFTS

INDOOR/OUTDOOR PLAY

Activities throughout the summer so your child does not experience that summer slide effect!



## Summer 2020

# JUNE 2 – SEPT 3

FULL TIME/PART TIME/DROP IN CARE AVAILABLE – register anytime!!!

YOU CHOOSE YOUR SCHEDULE & PAY ACCORDINGLY!

CPR/FIRST AID CERTIFIED STAFF

FOR MORE INFORMATION VISIT

<https://www.nrheg.k12.mn.us/domain/680>

or CONTACT MARNEE WHITE AT 507-417-2626 OR EMAIL [marnwhite@nrheg.k12.mn.us](mailto:marnwhite@nrheg.k12.mn.us)



# Age 3???

## Time to Screen!

### Early Childhood Screening

Looking for all 3-4 year olds...

Early childhood screening is mandated by the State of Minnesota for all children entering Kindergarten. The best time to have your child screened is between the ages of 3 and 4.

Early Childhood Screening is FREE and the earlier the BETTER! When your child turns 3, please call 507-417-2667 to schedule a screening appointment.

**UPCOMING SCREENING DATES:** April 6 & 7  
Ellendale United Methodist Church



### help me



- Help Me Grow provides resources for families to understand developmental milestones and learn if there are concerns. This helps families take the lead in seeking additional support or referring their child for a comprehensive, confidential screening or evaluation at NO COST.
- Help Me Grow is an interagency initiative of the State of Minnesota Department of Education, Department of Health, and Department of Human Services. We partner with all local service agencies.

### EARLY CHILDHOOD

Growing the Future.  
Family Strong.



## You Count! if you are counted



### IS YOUR FAMILY INCLUDED ON THE SCHOOL DISTRICT CENSUS?

Has there been a birth in your family? Have you recently moved into your neighborhood? Is there a new family in your neighborhood? ISD 2168 wants all families with young children to know about our programs and activities. Being on the school census also ensures that you will receive information regarding Early Childhood Family Education classes, Early Childhood Screening, and the Panther Preschool program information. In addition, funding for our Early Childhood Programs is based on the number of children on our census.

It is important that everyone be counted!

To be added to the census, please call Karla at our school office, 417-2605 or find the form on our Community Education Website at [www.nrheg.k12.mn.us](http://www.nrheg.k12.mn.us) under the community education tab.

Are you concerned about your child's development? Help Me Grow is a group of service providers working together to help area families. They provide free early intervention referral services to help families find and coordinate resources for their children aged birth to 5 years old.



Early Childhood Family Education classes recognize that parents are their child's first teacher. The following classes/activities provide excellent opportunities to work with your young child in a learning environment without the distractions of home.

## WHAT IS ECFE?

Early Childhood Family Education (ECFE) is a NRHEG Area Schools program that provides parenting information and support to families whose children are birth to five years old (not yet enrolled in kindergarten). A variety of classes, pre-school options, and activities are offered for all age groups. Most ECFE classes follow a similar format: parent/child activity time followed by parent education time to discuss common concerns and experiences while their children participate in an early childhood classroom. School readiness skills and activities are an important part of all programming.



## What does a typical ECFE class include?

### Parent-Child Activity Time

Families explore a classroom filled with developmentally appropriate play materials and learning activities planned by a licensed early childhood teacher. These experiences foster a child's social, emotional, cognitive, physical, and language skills.

### Parent Education Time

Parents meet with a licensed parent educator to share support, experiences, and information about child development and parenting techniques. Research on early brain development, parent-child relationships, child development, and guidance techniques are presented in ECFE classes.

### Children's Activity Time

Children learn with the early childhood teacher and practice social skills as they interact with one another.

## What are the benefits of ECFE?

ECFE works to strengthen families and encourages parents to provide the best possible environment for the healthy development of their children. Research shows that children whose parents are involved in their early education are more likely to be successful in elementary school.

## Waseca County Early Childhood Fair



For all families with preschool children! This annual event is for the parent and Families with children ages birth – 5. There will be activities, information about area services, animal petting zoo, book walk, and much, much more! This is an evening you won't want to miss!



Date: Friday, March 20<sup>th</sup>  
Time: 5:00-7:00pm  
Intermediate School Gym – in Waseca  
Free Event!





## ADVENTURES IN PARENTING CLASS

This multi-age class focuses on a variety of family issues and activities. Topics covered in parent discussion time are determined through discussion of parent needs/interests, current research, and teacher suggestions including child development, school readiness, temperament, guiding behavior, and sibling relationships. During separation from parents, children interact with the Early Childhood staff and other children and typically have a snack, crafts, stories, music, and more time playing with peers. These classes are for preschoolers aged 2-5 and their parents/grandparents/caregivers.

### 2020 Winter & Spring Session

**Classes will be held Monday or Tuesday evenings in the Ellendale & New Richland Preschool classrooms. 5:45-7:00pm**

*Class locations may rotate between Ellendale and New Richland depending on participants' preferences. Dates below are subject to change.*

Classes are: **Winter/Spring**

January 27

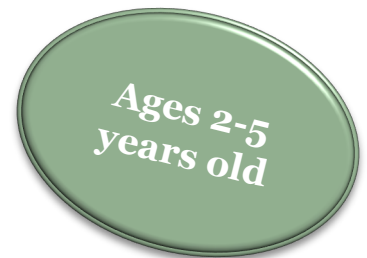
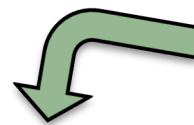
February 3, 10, 24

March 2, 16, 30

April 14, 20



Please join us and bring your friends for a fun night out with your little ones! Each class we will have circle time songs, amazing and useful crafts/activities that correspond with each theme for you to bring home and use or display, snacks, and parent to parent & child to child interaction time!



## Themed Mini-Classes

Instructors:  
Macy Whiteside &  
Stacy Hutchens



### Going on a Bear Hunt

Come along with us on a Bear Hunt, we will take you on an adventure you will never forget! We will meet new friends, listen to a story, play a game, make a craft, then make a snack to cure the hungriest of appetites!

**Date:** Monday, March 9 6:00-7:00pm  
**Location:** Ellendale prek classroom  
**Register by:** Thursday, March 5

### EASTER BUNNY BLAST

Join us in creating your very own Easter Eggs and participating in activities that will be sure to get you in the spirit!

**Date:** Monday, April 6 6:00-7:00pm  
**Location:** New Richland Preschool classroom

**Register by:** Wednesday, April 1

# NRHEG Panther



# PRESCHOOL



NRHEG Community Education and Early Childhood Family Programs take pride in investing in our youngest learners and in preparing children and families for success in school.

Registration Forms will be accepted starting Wednesday, April 1, 2020.



**NRHEG Panther Preschool** provides programming designed to help early childhood learners prepare for Kindergarten. Our program is designed for all families. Our Three Year-Olds are in the New Richland Secondary School or the Ellendale Elementary School and have options of 2 or 3 days a week programming in the morning. Four year old students are located in the New Richland Secondary or the Ellendale Elementary School and have options of 2, 3, or 4 days a week programming in the morning or afternoon. Please visit <https://www.nrheg.k12.mn.us/domain/50> for more information including days, times, location, and pricing!

*Scholarships are available to qualifying families through to the generous donations of Finly's Wings at Work, Rosenau Legacy of Angels Fund, Greater Mankato Area United Way, & MDE's Pathways II Grants.*

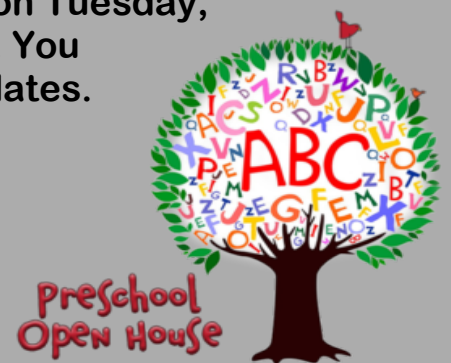
## PANTHER PRESCHOOL OPEN HOUSE

Registration & Open House for the 2020-2021 school year on Tuesday, April 21 in Ellendale or Thursday, April 23 in New Richland. You can attend either site and register for either site on these dates.

The Open Houses are from 6:00-7:00pm. Swing in during this time to check out the classroom, meet the teachers, and register! The registration fee will only be \$20 if you attend one of the Open Houses or register before April 23<sup>rd</sup>, 2020.

The registration fee after April 23<sup>rd</sup> is \$35.00 per child.

Registration information will be available for the 2020-2021 preschool program on our website starting Wednesday, April 1<sup>st</sup>. Please check our website: [www.nrheg.k12.mn.us](http://www.nrheg.k12.mn.us). Go to the Community Education tab, click on Early Learning, then Registration Forms.





# School Age Care

## OPEN HOUSE

NRHEG School Age Care is a Community Education daycare program for children ages preschool through - 5<sup>th</sup> grade.

**Monday, March 23 at the Ellendale Elementary School  
4:15-6:00pm**

# KINDERGARTEN ORIENTATION

**Monday, March 23 4:30-6:00pm  
Ellendale Elementary School**

**For all incoming 2020-2021 Kindergarten/Bridges students**



**Stop by the Community Education Table to pick your child's FREE HARDCOVER BOOK & Summer Learning Packet!**

*Southern Minnesota Initiative Foundation Early Literacy Grant*

**Need daycare before or after school? Register for School Age Care for the 2020/2021 school year!**



# Mother's Day Basket

with Essential Oils  
Instructor: Naomi Knudtson

Come spend a couple hours talking and thinking all about mom! Each child will leave with a special gift just for their mom for Mother's Day! We will be using a combination of arts and crafts and Essential oils with the one and only Mom in mind!! Your child will make a craft project for mom, hand scrub, bath salts, and perfume spray.

*All gifts will go home with a recipe card of essential oil items with the instructor's information.*

Ages: 6-10 years  
Time: 3:05-4:30pm  
Location: Ellendale School Cafeteria  
Class max: 10 kids

Date: Tuesday April 28  
Cost: \$27.00  
Register by: April 22



## FANTASTIC FRAMES

GRADES 1 AND UP

Do you have a special photo from this year you would like to hang in your room? Then come to this class and we will decorate a frame for you to display it in. All types of accessories will be available including sparkling gems, sea shells, sports buttons and shapes, glitter, paint, rocks, marbles, pretty papers, and ribbon. You will leave with 2 frames you will be proud to display your photos in!

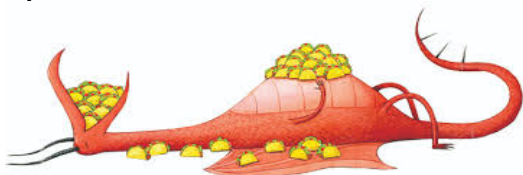
**HOT GLUE GUNS WILL BE USED**

Date: Wednesday, May 27  
Location: Ellendale Cafeteria  
Instructor: Macy Whiteside  
Time: 3:15-4:45  
Cost: \$19 per person Register by: Tuesday, May 19



If you want to make friends with dragons, tacos are key! Come and enjoy a party all about the book *Dragons Love Tacos*. We will read the story, and do projects and a snack related to it. Just don't bring any spicy salsa because dragons hate spicy salsa (and find out what happens if they have any)!!!

Instructor: Angela Gehrke  
Ages: 4-7 years old  
Date: Friday, April 3  
Cost: \$15 per child  
Time: 6:00-7:30pm  
Location: NR prek classroom  
Register by: Tues. March 24



## FATHER'S DAY GIFT

Ages: 1<sup>st</sup> grade and up

Let your imagination soar with our Father's Day Gift class this year! Is your dad a handyman? Is he a Grill-master? Is he a Gardener? Join us to customize this one-of-a-kind gift for your dad or special guy in your life that he is sure to use and love for many years to come!



Date: Tuesday, June 16  
Time: 10:00-12:00pm.  
Cost: \$28.00 each.  
Location: Secondary school, classroom – TBD.  
Register by: June 2



# SPRING WALL ART

**Ages: 2<sup>nd</sup> grade and up**

**Let's freshen up your space with some spring wall art! We will create a customized piece you will be proud to display. Keep it for yourself or give it to someone special (grandparent maybe?) for them to display with pride!**

**Date: Wednesday, May 6  
Location: Ellendale Cafeteria  
Instructor: Macy W.**

**Time: 3:15-5:00pm  
Cost: \$28 each  
Register by: Thurs, April 23**



**Parent / Child Date Night**

Adult & Child painting classes are designed for you and that special child to have a night out together to have some creative fun! Each person will paint their own 12x16 gallery wrap canvas using acrylic paints.

**Ages: 2<sup>nd</sup> Grade and up**

**Instructor: Jessica Androli Date: Monday, May 11  
Time: 5:30-7:30pm. Cost: \$45 per couple.  
Location: NR HS art room (D153)  
Register by: Monday, May 4**

# ARTSY ANIMALS



Which animal do you want to learn how to paint? All the supplies you will need are supplied in this class, but make sure you bring an apron, smock, or an old shirt to keep your clothes clean! There is a limit on the number of children who will be able to take this class, so sign up early! *Make sure to write "dog, cat, horse, pig, or cow" on your registration form so our instructor can get your canvas prepped before the class! If you choose a dog, please indicate which breed of dog.*

**Ages: 2-6 Grade  
Instructor: Jessica Androli  
Register by: Tuesday, July 7**

**Date: Tuesday, July 14  
Location: NR Secondary School - classroom TBD**

**Cost: \$21.00  
Time: 9:00-10:45am**

# ADVERTISEMENT



## New Richland Public Library Summer Event Schedule

119 S Broadway | New Richland, MN 56072 | 507-465-3708

HOURS:  
M, Th 1-7 pm  
Tu, W 9 am-1 pm



### Chinese Ribbon Dancing\*

In this workshop, kids will make your own ribbon wand and learn the basic moves of the beautiful traditional Chinese art form where ribbons and choreography form captivating patterns and designs.

7/16 at 4 pm (ages 7-12)



### Northwoods Animal Tales

Discover how Bear lost his tail and why Rabbits have long ears. COMPAS teaching artist Kevin Strauss intersperses the stories with biology and ecology information about the animals in the stories.

7/23 at 4 pm (all ages)



### Dragons: Return of the Ice Sorceress

Don't miss this fun ScienceTellers fantasy adventure featuring awesome dry ice effects!

7/27 at 4 pm (all ages)

## SUMMER READING PROGRAM: Ages 2-18 read to win prizes June -July



### Kids Events

**Romp and Rhyme Story Time (June-August)**  
Wednesdays at 10 am (ages 3-6)

**Dog Man Unleashed\***  
6/4 at 2 pm (ages 7-12)

**Level Up: Camp Letter Home\***  
6/8 at 2 pm (ages 7-12)

**Level Up: Ozobots\***  
6/16 at 10 am (ages 7-12)

**Fairy Tale Chef\***  
6/22 at 2 pm (ages 7-12)

**Acting and Playwriting Workshop\***  
7/2 at 4 pm (ages 7-12)

**My Little Pony Party**  
7/9 at 2 pm (ages 4+)

**Fantastic Beasts throughout the World**  
7/13 at 2 pm (ages 4-12)

**Stop-Motion Harry Potter and Stop-Motion Star Wars\***  
7/21 at 10 am (ages 7-12)

**Fairytale STEM\***  
7/30 at 2 pm (ages 7-12)

**Preschool Fairytale Fun**  
8/11 at 10 am (ages 2-5)

### Teen and Tween Events

**Smoothie Station\***  
6/11 at 2 pm (ages 13-18)

**Bracelet Making Workshop\***  
6/18 at 6 pm (ages 13-18)

**Creator Studio: Sphero Storytelling\***  
7/6 at 2 pm (ages 9-15)

**Tween Battle of the Books\***  
Date TBD (ages 9-13)  
St. Peter Community Center

**Battle of the Books\***  
Date TBD (ages 13-18)  
St. Peter Community Center

All of New Richland Public Library events are FREE!

\* registration required





OK kids, get ready to roll up your sleeves and get your hands dirty as we cook up a storm! Not only will you be shown how to make a range of desserts and treats, you'll be having so much fun that you won't even realize how much you are learning about numbers, measuring, science, reading and following recipes, and more!

All kids will take pride in learning how to create various healthy and tasty meals and snacks that they can then make unassisted while they are at home!

**Instructor:** Kelly Delacruz **Ages:** 3-7<sup>th</sup> Grade  
**Date:** Tuesday, May 5 **Time:** 3:30-5:30pm  
**Cost:** \$26.00 **Register by:** Tues. April 28  
**Location:** New Richland School FACS room (E104)

*\*\*please indicate on the registration form if your child has a food allergy so we can send you an additional form to fill out*



# HOME ALONE

**Instructor:** Macy Whiteside  
**Grades:** 3-7<sup>th</sup>

The summer is fast approaching and that may mean your child will be home alone for an extended period of time until you get home from work or an outing. Whether left alone for an hour or a few hours a day, your child should feel comfortable being alone. This workshop for children will address several topics relating to being "Home Alone".

Topics include personal safety tips, stranger danger, basic first aid, gun & fire safety, dealing with loneliness and boredom, storm safety, dealing with siblings, as well as trust and honesty. You will also get your own first aid kit to bring home with you.

**Date:** Wednesday, May 13 **Time:** 3:15-5:15pm.  
**Cost:** \$26.00 **Location:** Ellendale School Media Center  
**Register by:** Friday, May 8

## CABS: Child and Baby-Sitting Safety Class

**Instructor:** Lori Ann Hameister **Grades:** 4-8<sup>th</sup>

CABS: Child and Baby Sitting Safety Class / American Safety & Health Institute ([www.hsi.com](http://www.hsi.com))

Learn the responsibilities of being a prepared, safe, responsible, and professional babysitter. Topics include starting your own babysitting business, child development, behavior guidance, supervision, proper feeding, & diapering techniques, personal safety, medical emergencies, basic first aid care, and fire safety. Instructor provides baby dolls, bottles, diaper supplies for hands-on participation skills. The course is developed by the American Safety and Health Institute and approved by the American Pediatrics Association. Class Participants receive a CABS book and ASHI certification card. Students attend this class independently. Parents are encouraged to review the take-home information and discuss it with their child. Students can bring a snack.

Wed., May 20 3:15-6:15pm \$43 per student  
 New Richland Secondary School room D105B  
 Register by: Wed. May 13  
 Min. 10 students/Max. 20 students



### GRASP – NRHEG Academic Summer Program

A correspondence summer program designed to reinforce math and reading skills learned during the school year just completed!

GRASP is a workbook program designed for students who have completed grades K-8 to keep their skills current over the summer months. Students complete nine lessons in math, reading, or both over the summer. Each lesson takes about one hour to complete. Mail the lessons in, then they are scored, results recorded and returned to the children. Children receive a medal soon after Labor Day. Books will be distributed to students the last week of school. Register for the grade just completed.

**GRASP REGISTRATION DEADLINE:**  
**Friday, April 17**

**Cost:** Math \$26.00. Reading: \$26.00.  
 Math & Reading: \$48.00



**Boys & Girls**  
ages 5-11 years old.

*You'll never hear I'm bored again!*  
The temperature's rising, school's out of session, and all your kids want to do is sit inside and play.

Make this summer more fun than ever with games, crafts, and activities they can do for 4 weeks this summer with their friends. From messy projects to those that will cool your kids off with splashes of water, we've come up with different themed weeks that are sure to keep your kids busy and engaged this summer. Many themes include cooking, science, crafts, games, and outside time along with a snack. Register for just the weeks that fit your schedule or all 4 weeks for your best value and more fun!

**Ellendale Community Center**

**Time:** 12:30-3:00pm

**Week 1** Artful Antics (June 22 & 24)

**Week 2** Mission Impossible (July 7 & 9)

**Week 3** Mad Science (July 21 & 23)

**Week 4** Around the World in 80 Days (August 4 & 6)

**Cost per week:** \$20 per person

**Cost for 4 week session:** \$75.00

**Register by:** 1 week before each session

*Unicorns... Mermaids...  
and essential oils*

Embark on a magical journey with essential oils and your favorite mythical creatures, unicorns, and mermaids! We will be making two mermaid favorites with essential oils and having a yummy magical treat! We will wrap the class up by making unicorn slime!

*Ingredients include: distilled water, witch hazel, rosemary, lavender, cedar wood oils, and colorant/dye.*

**Age:** 4-8 years.

**Cost:** \$20.00

**Date:** Thurs. April 9

**Time:** 3:05 - 4:30pm

**Location:** Ellendale School Cafeteria

**Register by:** Wed. April 1

*Maximum of 10 participants*

*All items (a drink, hair spray, foot scrub, and slime) will go home with a label and a recipe card to make again at home. Each recipe will have the instructor's information on it if you have any questions.*



**DOES YOUR CHILD NEED A SAFE AND FUN PLACE TO GO THIS SUMMER?**

Are they getting bored or need to get out of the house for a while?

School Age Care is taking registrations for **FULL TIME / PART TIME / DROP IN CARE - YOU CHOOSE YOUR SCHEDULE & PAY FOR WHAT YOU NEED!**

**OPEN Monday-Friday 6:30am - 6:00pm**

**FOR MORE INFORMATION** visit our webpage at <https://www.nrheg.k12.mn.us/domain/680>

call or email Marnee at 507-417-2626, [marnwhite@nrheg.k12.mn.us](mailto:marnwhite@nrheg.k12.mn.us)



**SWIMMING LESSONS**  
**GENEVA POOL**

Instructor: Red Cross, City of Geneva

Please call Kiley Lassahn at 507-402-4630 if you would like to sign up or want more information. This summer there will be 2 sessions of Red-Cross swimming lessons. The first session will be during the day in June, and the second session will be in the evenings in July. Each session will be two weeks in length.

Please look for the ad in the local paper this spring for swimming lesson dates and important pool information, along with a flyer stating the exact dates, times, and prices coming home in backpacks in May.



**SWIMMING LESSONS**  
**ST. OLAF LAKE**

Instructor: Red Cross, City of New Richland.

Registration and payments can be made online at [www.cityofnewrichlandmn.com](http://www.cityofnewrichlandmn.com) in the Parks and Rec Section. Please call Sara Jo at (507) 465-3514 for questions.

Cost: \$30 per student/session

Classes are limited to the first 10-12 students to register. Please register for ONE class per summer per child. Please inquire about joining the next session if your child passes.

A flyer will be sent home this spring for swimming lessons with session dates and times and other important information.



P  
A  
N  
T  
H  
E  
R  
S

**TEAMS:**

**Elementary Competition Cheer Team** Grades 3-6  
**Elementary Stunt Group Team** Grades 3-6

**Varsity Competition Team** Grades 7-12  
**Varsity Stunt Group Team** Grades 7-12

**PROGRAM DATES:**

June 2020 - February 2021

**REGISTRATION:**

Informational Meeting: Thursday, March 5 - 6:00-7:00pm,  
NR Secondary School Lower Commons

Sample Practice: Monday, March 10 - Ellendale School North  
Gym, 6:00-8:00pm

Registration Night: Thursday, March 19 6:00-7:00ish,  
NR Secondary School Lower Commons

*Registrations are accepted until March 24<sup>th</sup>*

# COMPETITION CHEER PROGRAM

**COST:**

COMPETITION TEAMS: \$150 Due at registration.  
Specific pricing information for your  
cheerleader will be available to you during the  
Informational Meeting.

\$50 Youth  
Scholarships  
available - ask  
for more info!

**The Panther Competition Cheer Teams**

Practice weekly and compete in 5 Competitions during the season.  
This Program is a commitment and requires you to be at all practices  
and competitions as your team counts on you! If you are interested  
in more information please contact the coaches at  
[panthercheercoaches@gmail.com](mailto:panthercheercoaches@gmail.com) and attend the informational  
meeting on March 5 at 6:00pm in the New Richland School Lower  
Commons.





# YOUTH T-BALL

**PLAY BALL!** Our T-ball program (ages 4-K) is designed to give your child a fun experience while developing basic skills such as throwing, catching, batting, base running, fielding, and teamwork. Teams will be divided according to location.

A detailed registration form will be sent home in backpacks in March. Please fill this form out and return it to your child's school office or to Community Education.

**Cost:** \$25 per player    **Time:** 6:15-7:15pm (approx.. end time)    **Register by:** April 7

*Practices will be held the week of June 1<sup>st</sup>, with games played on Mondays/Wednesdays for the remainder of June.*

# YOUTH COACH-PITCH

Coach Pitch is for players (1<sup>st</sup> & 2<sup>nd</sup> grade) that are ready for the next step after T-Ball. Teams will use a hard ball and will continue to develop their fundamental skills along with refining their basic skills such as throwing, catching, batting, base running, and teamwork. Teams are divided according to location.

A detailed registration form will be sent home in backpacks in March. Please fill this form out and return it to your child's school office or to Community Education.

**Cost:** \$25 per player    **Time:** 6:15-7:30pm (approx.. end time)    **Register by:** April 7

*Practices will be held the week of June 1<sup>st</sup>, with games played on Tuesdays/Thursdays for the remainder of June.*

# FLAG FOOTBALL

**Grades 1-5, boys & girls**  
**Instructor:** Coach Ryan Evans

**Date:** Mondays & Wednesdays, July 13-August 12

**Time:** 1:00-2:00pm

**Location:** Ellendale Practice Fields (east of school)

**Cost:** \$40 per student.    **Register by:** Friday, July 3

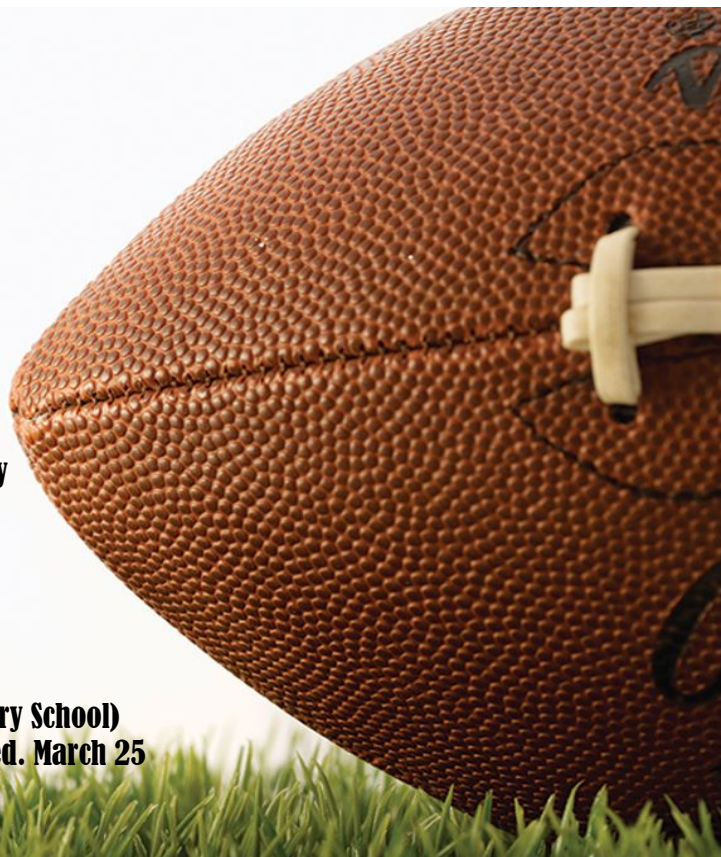
Join Community Education coaches and volunteers for a beginning football experience that will emphasize having fun and learning the basics of football. Participants will play flag football in small groups against players from their own grade or similar ages. Fundamental skills and basic rules will be taught in a fun and energized atmosphere. Make sure to bring athletic shoes or cleats, along with shorts and a water bottle! **Wear SUNSCREEN!**





NRHEG Community Education is running a football camp for anyone in grades 1-6. This is a non-contact, 4-day camp emphasizing the fundamentals of football. Participants will need shoes or cleats, shorts/pants, and a shirt (no pads or helmet required). All participants will be introduced to a variety of position specific skills that includes an emphasis on passing, along with catching, punting, kicking, etc.

- **Cost: \$40**
- **Thursday, Friday, Monday, Tuesday; April 2,3,6,7**
- **6:00-7:30pm**
- **New Richland practice fields (south lawn of the Secondary School)**
- **Coach: Aaron Gilliland      Registration Deadline: Wed. March 25**



## NRHEG CLAY TARGET TEAM

**Grades:** 6-12

Available in both fall and spring, this league is for students who have a valid gun safety certificate and have an interest in shooting sports. This is the fastest growing high school sport in MN! The State Class Championship represents the largest youth trap shoot in the nation and the MSHSL State Tournament is currently the only one of its kind in the nation.

**Fall League:** begins in mid-September and goes for 6 weeks with no state shoot at the end. It's a great way for students to introduce themselves to the sport before the Spring League. Registration for the Fall League begins in August so being on the mailing list before school starts is very important. Shoots are held at the Owatonna Gun Club. Registration covers 2 rounds of targets per week for the 6-week season, the cost of league registration, a meal at our fun shoot, and a team shirt.

**Spring League:** involves weekly shoots one night per week starting the first week of April and going through the MSHSL State Tournament in late June. Shoots are held at the Owatonna Gun Club. Registration covers 2 rounds of targets per week for the 10-week season, the cost of league registration, state shoot registration, a meal at our fun shoot, and a team shirt.

**All students provide their own firearms, ammunition, and safety gear. Students from neighboring school districts without a team or who are home schooled are also welcome to join us!**

For more information contact Dan Sorum at 507-417-2627 or email him at [dsorum@nrheg.k12.mn.us](mailto:dsorum@nrheg.k12.mn.us) If you wish to be placed on the team mailing list email Mr. Sorum your contact information ahead of time.

ALL FEES need to be sent to Mr. Sorum (306 Ash Ave. South, New Richland, MN 56072) with checks made out to NRHEG Community Education with Clay Target in the memo. Registration is set in January so getting on the mailing list is important for up to date information.



# SPEED, AGILITY, AND WEIGHT LIFTING PROGRAM

**WHO:** 7-12<sup>th</sup> grade students

**WHERE:** NRHEG Secondary School

**SESSION TIMES:** 6:00am – 7:00am  
7:00am – 8:00am  
8:00am – 9:00am

**COST:** \$50 per student (checks written to Community Ed)

*More information and updated flyers will be made available to students in May*

# BOYS

## SUMMER BASKETBALL

# CAMP

3-9<sup>th</sup>  
grade

### IMPROVING SKILLS AND MAKING NEW FRIENDS!

**Our camp will include instruction on fundamentals from the Head Coach and from former NRHEG player Benji Lundberg.  
*Camp t-shirt included!***

**When:** June 4 & 5

**Time:** 8:15-9:45am, 3-6<sup>th</sup> grade (grade entering in fall)  
10:00-11:30am, 7-9<sup>th</sup> grade (grade entering in fall)

**Cost:** \$25 per camper, checks made out to NRHEG

**Where:** NRHEG Middle School gym (New Richland)

**Register by:** Tuesday, May 26

*Additional information and registration flyers will be sent home in May.*



2020-2021  
Youth Hockey Registration



**Sunday, August 23rd**  
**Wednesday, August 26th**  
**6-8pm**

Waseca Community Arena

***Returning and New players***

*Skaters succeeding one goal at a time!*

Questions contact: Shannon

[bsttcliff@yahoo.com](mailto:bsttcliff@yahoo.com)

or 507.461.0985



**[www.wasecahockey.org](http://www.wasecahockey.org)**



ADVERTISEMENT

We would LOVE to increase our class offerings! Do you have a special skill or talent? Ever thought about teaching a class? We are looking for instructors to teach a variety of general interest and arts & crafts classes for adults. Please consider joining our team!  
Paid and volunteer positions available.



## BARN QUILTS

**Instructor: Renee Holmes**

Join the barn quilt movement by creating your own painted quilt block. You can mount these on a barn, between posts, anywhere in your yard, or even hang somewhere inside your house. You will begin with a pre-primed board and go through each step— drafting, taping, and painting, with careful attention to detail. You will be able to choose from several patterns that have been prepared for you. You will have the option to choose between a simpler 2-paint pattern or a more detailed 3+ paint pattern. The 2-paint pattern should be completed by the end of class on the third day, whereas the 3+ paint pattern will require you to finish your product at home with the skills you have recently acquired during class!

Items included in the cost of the class are: a pattern, 2x2 foot piece of MDO Board, sealer for the edges, and primer. Supplies provided for your use include yard sticks, putty knives, erasers, scissors, pencils, rulers, patterns. Other supplies will be needed, but will be explained at the first class. We will be working at the home of Renee Holmes (north of Beaver Lake in Ellendale) in a large shed. Because we will need to wait for the paint to dry between colors, the class will be done over a period of time. The class minimum is 6 people, maximum is 8.

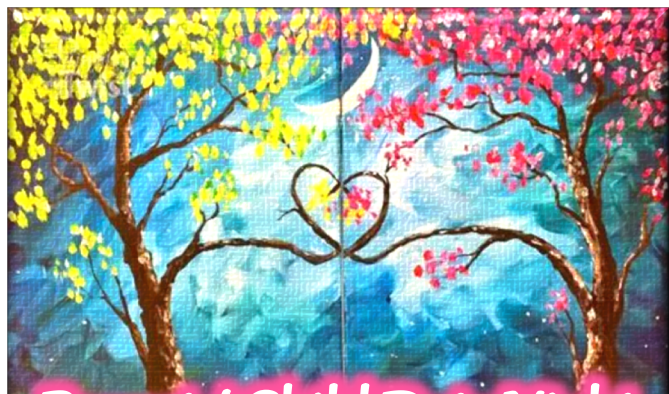
**Dates:** Wednesdays – April 15, 22, 29

**Time:** 6:30-8:30pm

**Cost:** \$58.00 per person

**Place:** Renee Holmes (north of Beaver Lake in Ellendale). Directions will be mailed when you register.

**Register by:** Wednesday, March 25<sup>th</sup>



## Parent / Child Date Night

Adult & Child painting classes are designed for you and that special child to have a night out together to have some creative fun! Each person will paint their own 12x16 gallery wrap canvas using acrylic paints.

**Instructor:** Jessica Androli **Date:** Monday, May 11  
**Time:** 5:30-7:30pm. **Location:** NR HS art room (D153)  
**Cost:** \$45 per couple. **Register by:** Monday, May 4

## PARENT'S SUPPLEMENTAL COURSE FOR STUDENTS ENROLLED IN DRIVER'S EDUCATION

If you are the “primary driving supervisor” who will supervise a teen driver for the majority of their required driving hours, you will benefit from this 90-minute class. Effective January 1, 2016, every student under the age of 18 who completes behind the wheel instruction and is testing for a provisional driver’s license must submit a driving log. Parent/guardians have two options regarding the supervised driving log: complete this supplemental parent class and then submit a supervised driving log showing their teen has completed at least 40 hours (2,400 minutes) of supervised driving, 15 (900 minutes) of which are nighttime hours; or if the parent/guardian chooses to not complete this supplemental parent class, the driving log must show that their teen has completed at least 50 hours (3,000 minutes) of supervised driving, 15 (900 minutes) of which are nighttime hours. This course will cover the graduated driving license law information, safety risks for teen drivers, potential adult influence on teen driving behavior, and additional resources.

Class dates and information will be announced during the classroom portion of Driver’s Ed.



**The American Red Cross First Aid/CPR/AED** program helps participants recognize and respond appropriately to cardiac, breathing, and first aid emergencies. The courses in this program teach the knowledge and skills needed to give immediate care to an injured or ill person and to decide whether advanced medical care is needed. This program offers a choice of first aid, CPR and AED courses to meet the various training needs of a diverse audience and is offered in a blended learning (online learning at home with instructor-led skill session) format.

### **Certification Requirements:**

Blended Learning (2.5 hours online learning, 3 hours in-person skill session): \* Complete all lessons of the online learning session and pass the online assessment with a score of at least 80%. \* Participate in all course activities. \* Demonstrate competency in all required skills.. \* Successfully complete the 'Putting It All Together Assessment Scenarios'.

### **Certificate Issued and Validity Period:**

All First Aid/CPR/AED certifications are valid for 2 years from the date of course completion.

**Instructor:** Jacki Anderson      **Location:** New Richland Secondary School Media Center. Enter Door #1E  
**Skills Class:** Saturday April 4<sup>th</sup> 9:00-12:00pm or Saturday May 16<sup>th</sup> 9:00am-12:00pm.      **Cost:** \$82 per person.

**To register:** Fill out the NRHEG Community Education Registration form and submit payment. Then email Jacki at anderson4redcross@gmail.com so she can send you instructions for the online course and if you have any questions. Each participant will need to complete the online course work on their own and bring in a completion certificate to the skills session. The skills session takes approximately 3 hours.

## **Who Will Pay Your Income during Retirement After the Paychecks Stop?**

If you are nearing or entering retirement and are interested in a strategy designed to help build an income stream and make your retirement income last, join us for *What Happens After the Paychecks Stop? A Retirement Income Primer*.

We'll explore how to budget for retirement expenses, examine potential sources of retirement income and identify ways to address potential risks.

We hope you will join us.

**Date:** Tuesday, Sept. 15      **Time:** 6:00-7:00pm      **Cost:** \$5.00 per person      **Register by:** Wednesday, Sept. 9<sup>th</sup>.  
**Location:** New Richland Secondary School, media center      **Class minimum:** 5 participants

# **STRATEGIES FOR STUDENTS**

## **Executive Functions for a Variety of Issues**

This class is for parents and teachers interested in the design and implementation of strategies that teach children and students skills that are important in school and in life. Students with Autism, Brain Injuries or trauma, ADHD, or other areas that may affect learning may have some deficits in executive functioning. 5 executive function domains (organization, planning skills, emotional control, working memory, and focus & attention) will be addressed.

CEU's AVAILABLE

**Time:** 4:30-6:00 pm      **Dates:** Thursdays - March 12, March 26, April 2, April 16, April 30 . (5 Sessions)  
**Cost:** \$7.00 per person      **Location:** Ellendale Elementary School Media Center      **Minimum:** 4 Participants

**ST. CLOUD STATE UNIVERSITY**  
DRIVER IMPROVEMENT PROGRAM

**ARE YOU 55+**

THIS COURSE **WILL SAVE YOU 10% ON YOUR AUTO INSURANCE FOR 3 YEARS**

THERE ARE **NO** WRITTEN OR BEHIND THE WHEEL TESTS!

8 HOUR CLASS FOR THE FIRST TIME STUDENTS  
4 HOUR REFRESHER FOR THE REPEAT STUDENT

TO REGISTER FOR THESE OR OTHER CLASSES IN YOUR AREA CALL THE NUMBER BELOW OR  
[www.mnsafetycenter.org](http://www.mnsafetycenter.org)



**NRHEG High School**

306 Ash Ave So; New Richland, MN

**Apr 21 & Apr 28 (8 Hr First Time) 5:00 PM to 9:00 PM**

**Apr 23 (4 Hr Refresher) 5:00 PM to 9:00 PM**

**TOLL FREE**

**1-888-234-1294**

**1-320-308-1400**



**STAY ACTIVE and INDEPENDENT for LIFE (SAIL)**

Our new SAIL program (transitioned from Bone Builders) is a more comprehensive program very similar to Bone Builders and is for men and women of all ages, but now includes low impact aerobics and an educational piece at the conclusion of the class. The pace is slow and repetitive as participants progress at their individual rate to increase weights. Local New Richland resident Pam Goehring will lead free weekly classes.

**Date/Time:** Mondays at 1:00pm

Wednesdays and Fridays at 9:00am

**Cost:** Free

**Location:** New Richland Food Shelf (Old Washburn House)

**Registration Deadline:** No deadline. Participants can register at class.

For more information on this free osteoporosis prevention class, contact Loretta Schlaak at 507-461-5709 or email: [lschlaak@ccwinona.org](mailto:lschlaak@ccwinona.org)





**Instructor: Emily Schultz**

**Our Fitness Family believe we can do life better together! We understand that every person is unique, every goal is personal, together we build healthy, happy humans! Ring the Bell workout communities use a wide variety of movements, routines, and challenges based on the strengths of the coach, equipment available and spaces provided. This is truly customized group fitness as there will be multiple workout options daily and eventually you will even find multiple options/pathways within each workout to help you achieve your goals! Each day finishes with a 3 minute Knockout Round Workout! Choose daily from an Endurance workout or a Ring The Bell Strength Session.**

**LOCATION: Meet in the NR Secondary School weight room, enter through door #13**

**Session 4**  
 Dates: March 2 – April 29 M-W-F  
 Time: 5:00-6:00am  
 Fee: \$85 per person / 9-weeks

**Session 5**  
 Dates: May 1 – June 29 M-W-F  
 Time: 5:00-6:00am  
 Fee: \$85 per person / 9-weeks

**Session 6**  
 Dates: July 6 – August 31 M-W-F  
 Time: 5:00-6:00am  
 Fee: \$75 per person / 8-weeks

**Session 1**  
 Dates: September 2 – Oct. 30 M-W-F  
 Time: 5:00-6:00am  
 Fee: \$85 per person / 9-weeks

# Now hiring!


Substitute teachers and aides

- Make a difference in the community
- Flexible schedule
- Great pay and bonus opportunities
- Prior teaching experience not required


---

Call or visit us online to learn more.  
**800.713.4439 | [teachersoncall.com](http://teachersoncall.com)**

Teachers On Call is a Kelly Services® Company  
 An Equal Opportunity Employer © 2019 Kelly Services, Inc. All rights reserved 18-0847E



A Kelly Services® Company



**ADVERTISEMENT**

# COMMUNITY EDUCATION REGISTRATION FORM

Participant Name: \_\_\_\_\_

Address: \_\_\_\_\_ City: \_\_\_\_\_ Zip: \_\_\_\_\_

E-mail address: \_\_\_\_\_ Cell phone: \_\_\_\_\_ Work: \_\_\_\_\_  
(email is NECESSARY for updates and notifications of class info.)

1. Class/Activity: \_\_\_\_\_

Date: \_\_\_\_\_ Time: \_\_\_\_\_ Fee: \_\_\_\_\_

2. Class/Activity: \_\_\_\_\_

Date: \_\_\_\_\_ Time: \_\_\_\_\_ Fee: \_\_\_\_\_

3. Class/Activity: \_\_\_\_\_

Date: \_\_\_\_\_ Time: \_\_\_\_\_ Fee: \_\_\_\_\_

Who will be picking my child up or how will they get home after each class?: \_\_\_\_\_

TOTAL AMOUNT ENCLOSED: \_\_\_\_\_ CHECK #(s) \_\_\_\_\_

\*\*\* **Field trips will require an additional form & waiver to fill out - located in a school office or on our website.**

## **PARTICIPANT EMERGENCY CONTACT INFORMATION**

STUDENT GRADE: \_\_\_\_\_ AGE: \_\_\_\_\_ ALLERGIES: \_\_\_\_\_

PERTINENT MEDICAL INFORMATION : \_\_\_\_\_

1. PARENT/GUARDIAN/RELATIVE/FRIEND NAME: \_\_\_\_\_

PHONE: \_\_\_\_\_ CELL: \_\_\_\_\_

2. PARENT/GUARDIAN/RELATIVE/FRIEND NAME: \_\_\_\_\_

PHONE: \_\_\_\_\_ CELL: \_\_\_\_\_

---

## **ECFE Registration Form**

Parent's Name: \_\_\_\_\_

Address: \_\_\_\_\_ City: \_\_\_\_\_ Zip code: \_\_\_\_\_

Home Phone: \_\_\_\_\_ Cell: \_\_\_\_\_ Work: \_\_\_\_\_

Email Address: \_\_\_\_\_ (necessary for class updates)

Child's Name: \_\_\_\_\_ Birthdate: \_\_\_\_\_ Age: \_\_\_\_\_

Child's Name: \_\_\_\_\_ Birthdate: \_\_\_\_\_ Age: \_\_\_\_\_

Child's Name: \_\_\_\_\_ Birthdate: \_\_\_\_\_ Age: \_\_\_\_\_



# Registration Policies

## REGISTRATION INFORMATION

- \*Prompt registration is encouraged as space is limited and classes may fill quickly. Additional class times may be added if needed.
- \*Classes without enough participants will be cancelled.
- \*Classes are filled on a first-come, first-served basis. Waiting lists will be formed once classes are full.
- \*Confirmations of class registrations are NOT sent. Please assume you are registered unless otherwise notified.
- \*At this time phone and email registrations cannot be accepted. Please register via mail or in person. Include fee payment with registration form, as registrations will not be taken without payment.

## REFUNDS

- \*If a class is cancelled due to low enrollment, fees are refunded. No refunds will be given 72 hours prior to class start date. Refunds will not be made after the first class meeting. Bus trips are non-refundable after the registration deadline and some classes may be non-refundable due to registration requirements.
- \*In the event that a class is filled or cancelled, you will receive a cancellation notice by mail, email, or telephone - your registration fee will be refunded.

## PHOTOGRAPHY DATA

- \*Candid photos of participants in class or an activity may be used in NRHEG media and publications. You may decline authorization by contacting the Community Education Office at 417-2667.

## SCHOLARSHIP INFORMATION

- \*Families who qualify for the free or reduced price meal program may receive a reduction in class fees. Families may call NRHEG Community Education at 507-417-2667 to determine if they meet the criteria.

South Country Health Alliance (SCHA) members may take up to \$15 discount per class on most classes, limit of 5 discounted classes per year. If a class is less than \$15, the member may take the class free of charge. Members must be on SCHA at the time of registration, and through the duration of the class(es). Members must register in person in the Community Ed office and show SCHA card at the time of registration.

## REGISTRATION FEES

- \*Fees for ALL activities are due at time of registration. Please register by the deadline. Make checks payable to NRHEG Community Education. Please use a separate check for each activity & put name of class in the memo line.

## TRANSPORTATION

- \*Parents are responsible for their student's transportation unless noted otherwise. When picking up your student from class, please be prompt, as additional supervision is not provided.

## CANCELLATIONS

- \*In the event of school cancellation (late start, early out, or all day) classes/activities scheduled during this time will be cancelled. All programs that are cancelled or partially cancelled due to the weather will be attempted to be made up at the convenience of the instructor and facility schedules. No refunds will be given on classes that are cancelled or partially cancelled due to the weather.

